

adc

ADAPTIVE DYNAMIC CONTROL

UPORABNIŠKA NAVODILA ZA AMAZON ALEXO





---

## VSEBINA

|   |    |
|---|----|
| 1. USTVARJANJE RAČUNA.....                      | 3  |
| 2. DODAJANJE STORITVE ADC.....                  | 6  |
| 3. ROČNO DODAJANJE NAPRAV .....                 | 11 |
| 4. UPRAVLJANJE NAPRAV (GLASOVNO IN ROČNO) ..... | 15 |
| 5. GLASOVNI UKAZI ALEXA.....                    | 17 |



# 1. USTVARJANJE RAČUNA

The image shows two screenshots of the Amazon website's sign-in and account creation process, with callouts explaining the steps.

**Top Screenshot: Sign-In Page**

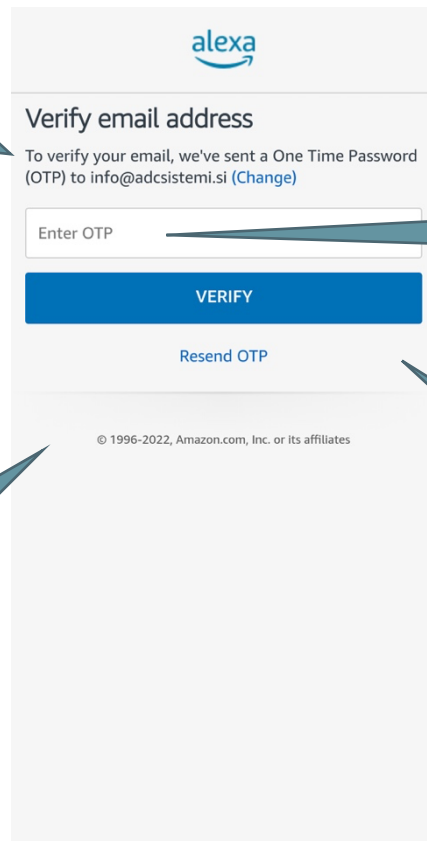
- Callout: "Naredimo nov Amazon račun" (We create a new Amazon account) points to the "CREATE A NEW AMAZON ACCOUNT" button.
- Form fields: "Email or phone number" and "Amazon password".
- Buttons: "SIGN-IN" and "CREATE A NEW AMAZON ACCOUNT".
- Text: "By continuing, you agree to Amazon's Conditions of Use and Privacy Notice." and "New to Amazon?".

**Bottom Screenshot: Create account Page**

- Callout: "Vpišemo naše ime" (We enter our name) points to the "Name" field.
- Callout: "Vpišemo našo e-pošto" (We enter our email) points to the "Your email address" field.
- Callout: "Vpišemo željeno geslo" (We enter the desired password) points to the "Create a password" field.
- Callout: "Ustvarimo račun" (We create the account) points to the "CREATE YOUR AMAZON ACCOUNT" button.
- Form fields: "Name", "Your email address", "Create a password".
- Text: "i Passwords must be at least 6 characters." and "Show password".
- Buttons: "CREATE YOUR AMAZON ACCOUNT" and "SIGN-IN NOW".
- Text: "By creating an account, you agree to Amazon's Conditions of Use and Privacy Notice." and "Already have an account?".



Pregledamo e-pošto, kamor smo prejeli enkratno geslo in ga vpišemo

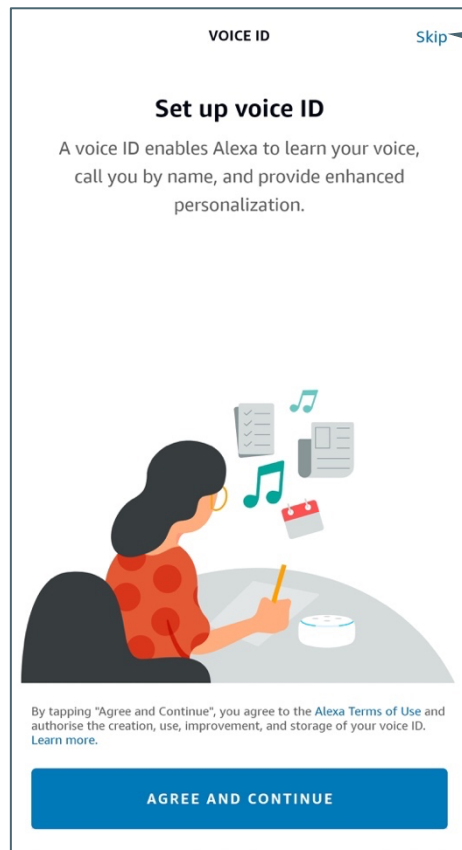


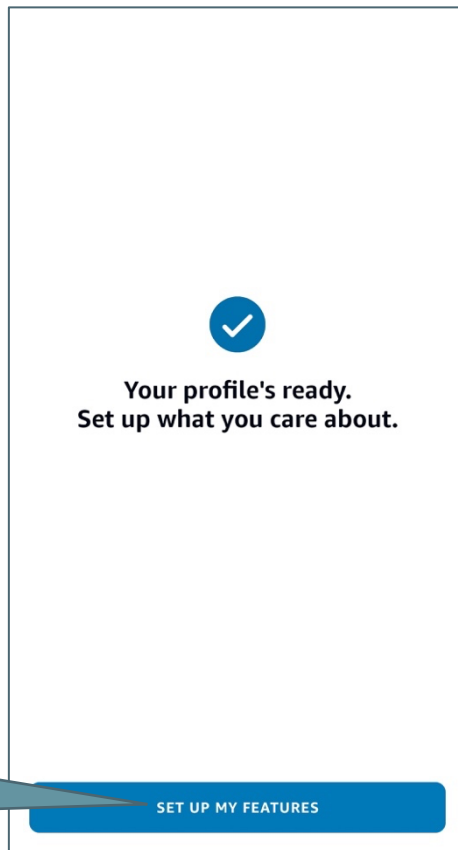
Vpišemo enkratno geslo

V primeru da enokratnega gesla nismo prejeli, ga še enkrat generiramo

Preverimo ali se geslo ujema

Korak preskočimo

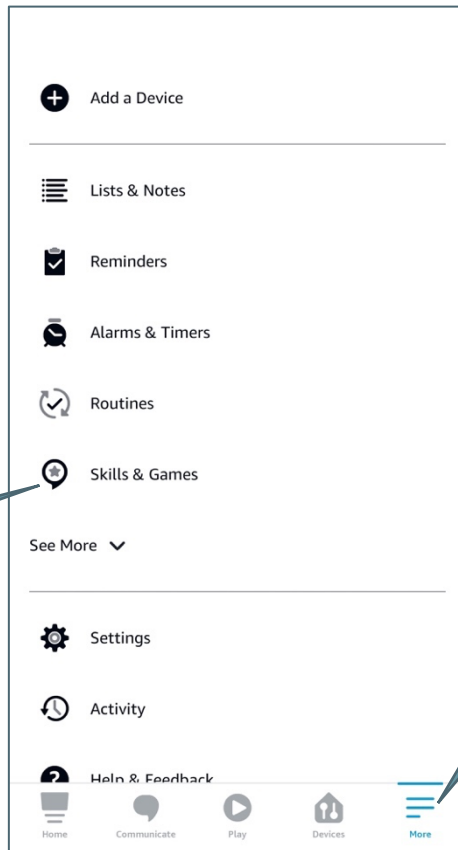




Potrdimo, da nastavimo lastnosti

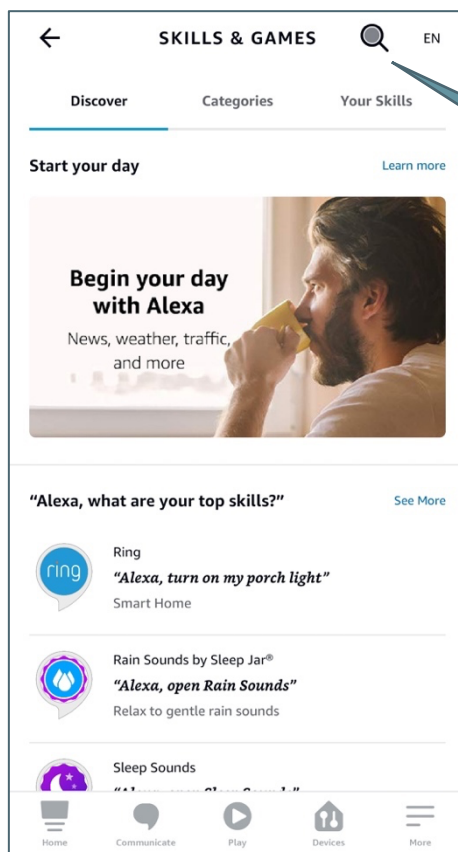


## 2. DODAJANJE STORITVE ADC



Pritisnemo, da nastavimo storitev ADC

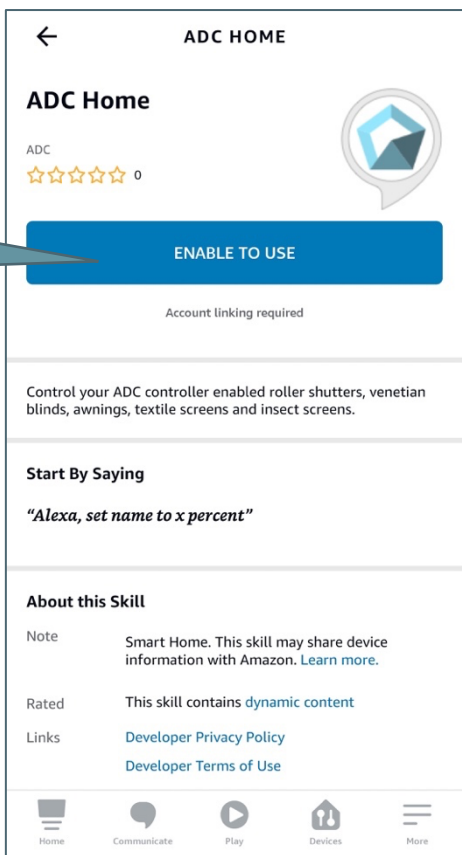
Postavimo se na zavihek »More«



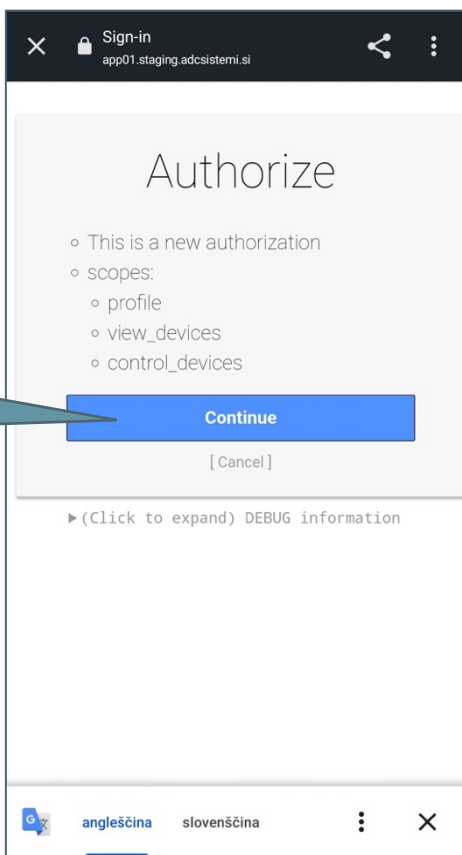
Poiščemo storitev ADC



Omogočimo uporabo




Avtoriziramo dostop





Uspešna povezava računa in storitve

**ACCOUNT LINKING**



**Your ADC Home account has been successfully linked.**

What to do next:

Close this window to discover smart-home devices you can control with Alexa.

**CLOSE**

Zapremo okno

Poiščemo naprave

∨

**Discover Devices**

Smart Home devices must be discovered before they can be used with Alexa.

**CANCEL**

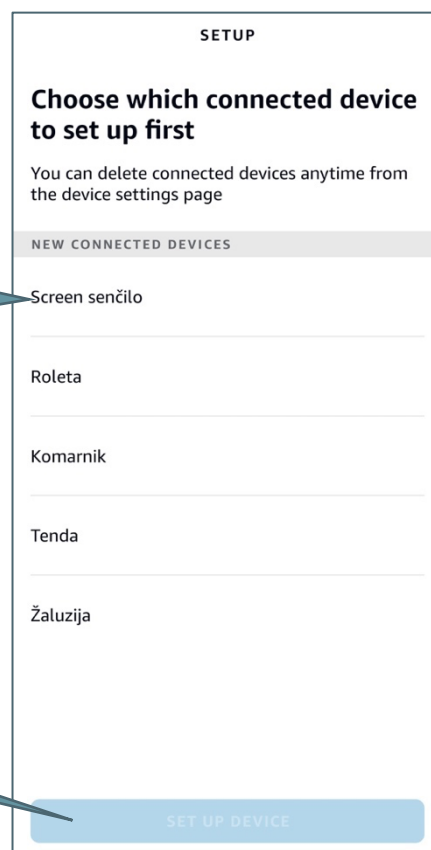
**DISCOVER DEVICES**



Počakamo nekaj sekund, da aplikacija najde bližnje naprave



Izberemo napravo, katero želimo dodati

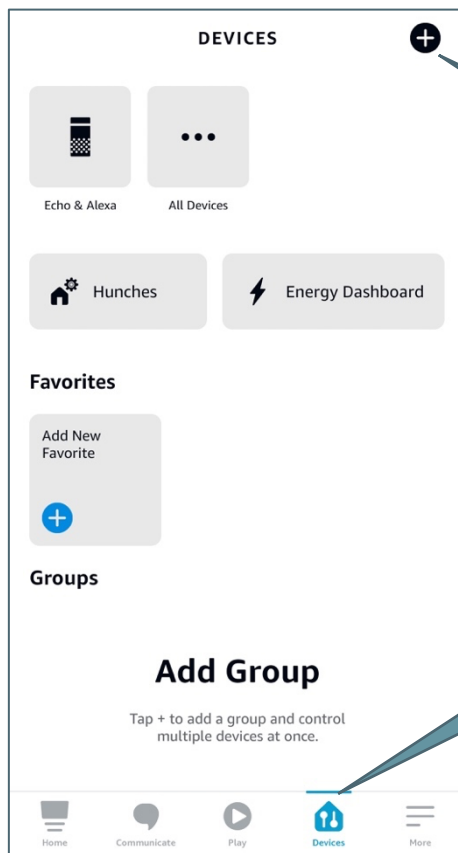


Potrdimo



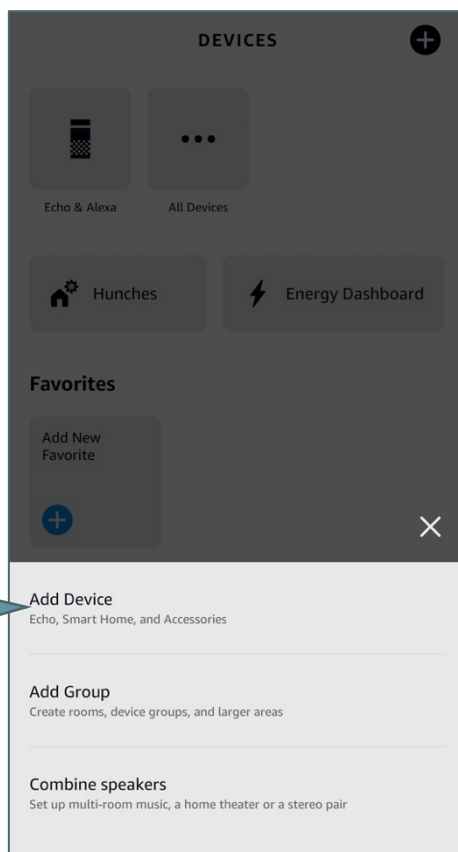


### 3. ROČNO DODAJANJE NAPRAV



Dodamo napravo

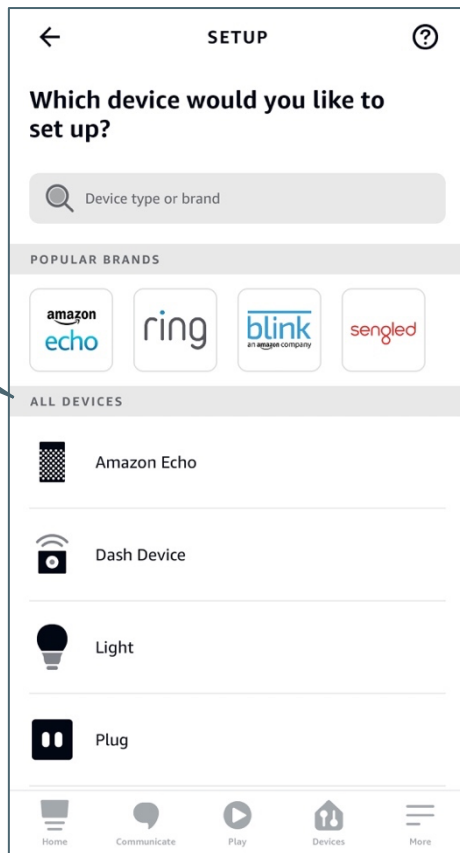
Postavimo se na zavihek



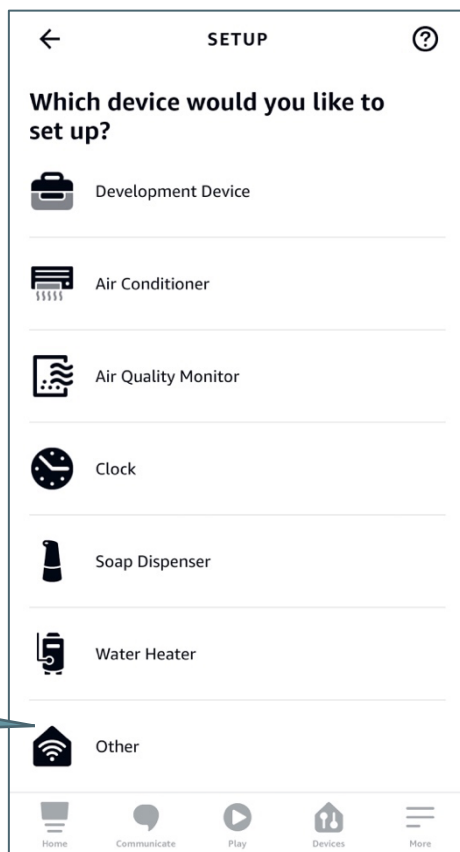
Dodamo posamezno napravo

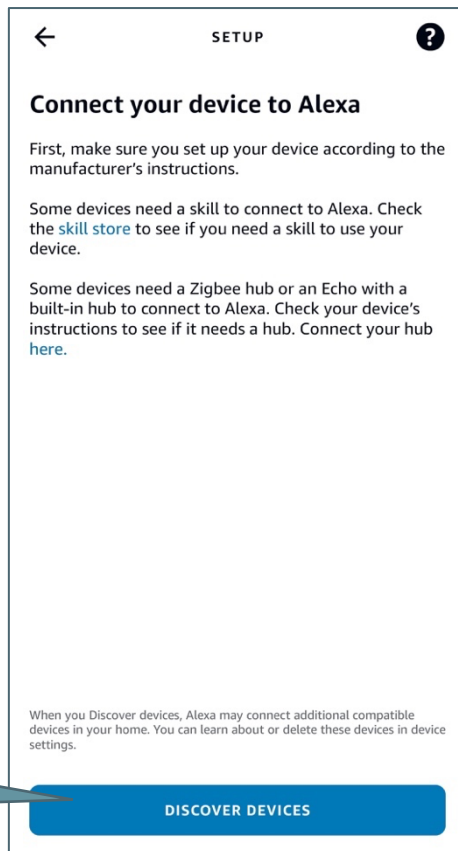


Podrsamo  
povsem navzdol

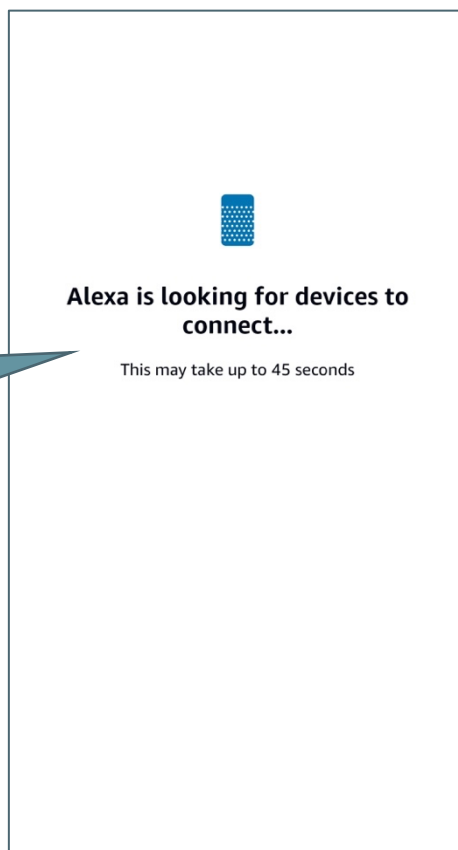


Izberemo  
»Other«





Poiščemo naprave



Počakamo nekaj sekund, da aplikacija najde bližnje naprave



Izberemo napravo,  
katero želimo dodati

SETUP

**Choose which connected device to set up first**

You can delete connected devices anytime from the device settings page

NEW CONNECTED DEVICES

Screen senčilo

Roleta

Komarnik

Tenda

Žaluzija

SET UP DEVICE

Potrdimo

Naprava je  
dodana

SETUP

✓

**Screen senčilo is set up and ready to use**

CONTINUE



## 4. UPRAVLJANJE NAPRAV (GLASOVNO IN ROČNO)

The image displays two screenshots of the Alexa mobile application interface. The top screenshot shows the main home screen with a large blue circular icon at the top and a list of suggestions below. A callout bubble points to the top icon with the text "Upravljam glasovno". The bottom screenshot shows the "DEVICES" screen, which lists various device categories like "Echo & Alexa", "All Devices", "Hunches", and "Energy Dashboard". A callout bubble points to the "All Devices" icon with the text "Seznam vseh naprav".

Upravljam glasovno

Tap or say "Alexa"

**Alexa Suggestions**  
Picked from your recent visits

Device Settings Skills & Games Echo Devices

**Link music services**  
Stream your favorite music and more

**Add phone number**  
Ask Alexa to call your phone when you misplace it

**Add an alarm**  
Set up daily or one-time alarms

**Create a reminder**

Home Communicate Play Devices More

**DEVICES**

Echo & Alexa All Devices

Hunches Energy Dashboard

**Favorites**

Add New Favorite

**Groups**

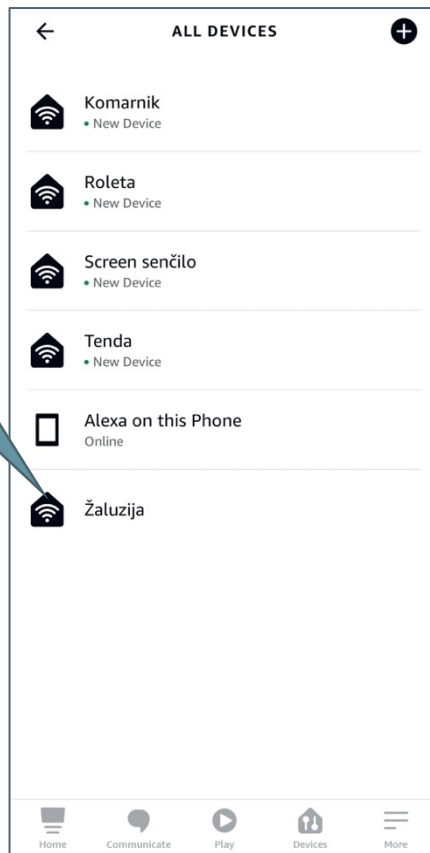
**Add Group**  
Tap + to add a group and control multiple devices at once.

Home Communicate Play Devices More

Seznam vseh naprav



Izberemo napravo katero želimo upravljati



Dvig ali spust senčila



Premik naklona



---

## 5. GLASOVNI UKAZI ALEXA

Seznam glasovnih ukazov s katerimi premikamo senčila z virtualnim pomočnikom Alexa:

Upravljanje vseh senčil hkrati:

- »Alexa, open blinds«
- »Alexa, close blinds«

Upravljanje skupine senčil:

- »Alexa, open living room«
- »Alexa, close living room«

Upravljanje posameznega senčila:

- »Alexa, open kitchen blinds to 50«
- »Alexa, close kitchen blinds to 50«
- »Alexa, set inclination of kitchen blinds to 50«